

Product Data Sheet: Lot & Batch Module

ibusinessTM is a feature rich enterprise-wide software package which integrates all your business processes from Sales Order processing to Manufacturing Planning.

For more than 10 years ibusinessTM software has helped small and medium sized companies in manufacturing, distribution and other industries ranging from pharmaceuticals to electronics, food processing, medical device manufacture and design. Led by a management team with over 40 years of manufacturing and industry experience, we are constantly engaged in a dialogue with our customers to identify trends and requirements so that we can ensure our products continue to meet their needs.

Our existing customer base spans the US, Canada, Mexico, France, the UK and Ireland.

ibusinessTM has all the necessary tools to meet the lot and batch tracking demands of the most stringent of industries. In fact it was designed to satisfy the requirements for FDA controlled environments and thus contains all of the audit tools necessary to provide the 'cradle to grave' traceability that is essential to such industries.

You can specify whether each item is lot or batch controlled and additionally you can specify a shelf-life for the item.

Traceability starts with the purchase order receipt where the incoming lot numbers are entered. You can use the vendor's lot number or if you prefer assign your own while referencing the vendor's incoming lot number. The system will assign the default shelf life from the item master but it is possible to override this if the received lot has a different expiration date.

Subsequent transactions require a lot number to be specified but there are convenient reference lists of valid lot numbers to make this easy. When items are combined into assemblies you can manually enter the component lots or else have them automatically assigned by the system on a FIFO basis. You can even choose whether to split

component lots into upper level assemblies or not.

Finished batches can be allocated manually to sales orders or you can allow the system to allocate them automatically when invoicing. At each step along the way, ibusinessTM validates the lot or batch number to ensure that accurate data is maintained throughout.

Every lot field is checked against the database to ensure that it is a valid lot and there are sortable reference lists of valid lots to speed up data entry. Bar codes can also be used for entering lot numbers.

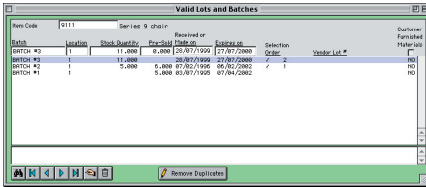
The lot and batch reporting facilities are significant allowing you to easily report using virtually all possible parameters. For example, if you receive a recall notice for a component from a vendor, you can easily determine every assembly that lot was used in and then quickly find every customer that received those batches. It's also easy to find lots that are nearing expiration or that need re-inspection.

ibusinessTM lot and batch combines, flexibility, power and ease of use which make it an excellent choice for maintaining your critical traceability data.

Here are some illustrative screenshots of just a few of the features the **ibusiness™ Lot & Batch** module offers...

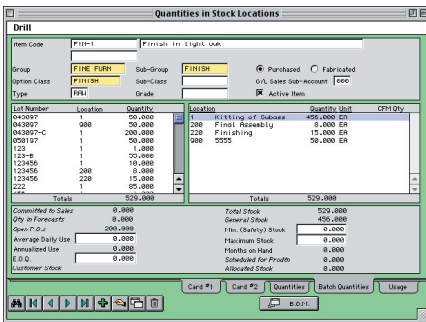
Feature Summary

- Cradle to grave traceability*
- Valid lots and batches*
- Vendor lots*
- Stock quantities by lot & batch*
- Where used lots & batches*
- Shelf life tracking*
- Associate with locations*
- Splitting policies*
- Lot & batch quarantine*
- Multile batches per sales line item*
- Automatic or manual batch assignment*
- Many detailed lot & batch reports*



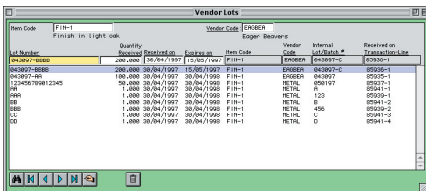
Valid Lots

Each item has a window that shows the lot history. This information remains available indefinitely. Double clicking on any line will take you to the original in-coming transaction for that lot.



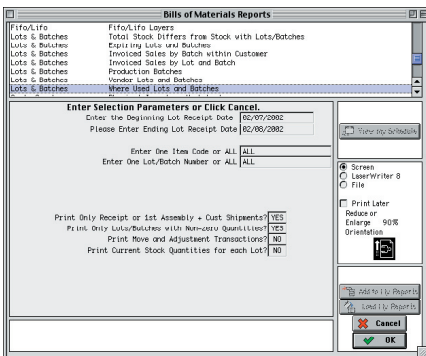
Stock Quantities

Each inventory item shows you all of its lots and their inventory locations. This information is maintained for every lot and batch.



Vendor Lots

Vendor's lot numbers are tracked separately. If you assign your own lot numbers on receipt you can use this screen to conveniently look up the vendor lot numbers.



Where Used Report

A single report that shows you a complete transaction history for every lot and batch in the system.

For:

- Further information
- Fully functional time-limited demo. CD
- On-site visit
- System quotation
- Consultations
- Training

Please contact your regional **ibusiness™** agent:



Unit 15, Bank House
331 South Circular Rd.
Dublin. 8
Ireland

Ph: 01-4534011 x 230
Fax: 01-4549024

E-mail: info@ieslimited.com
Web: www.ieslimited.com