

Product Data Sheet:

Job Costing Module

ibusinessTM is a feature rich enterprise-wide software package which integrates all your business processes from Sales Order processing to Manufacturing Planning.

For more than 10 years ibusinessTM software has helped small and medium sized companies in manufacturing, distribution and other industries ranging from pharmaceuticals to electronics, food processing, medical device manufacture and design. Led by a management team with over 40 years of manufacturing and industry experience, we are constantly engaged in a dialogue with our customers to identify trends and requirements so that we can ensure our products continue to meet their needs.

Our existing customer base spans the US, Canada, Mexico, France, the UK and Ireland.

Related Products:

For details of some of our other products that may also be of interest please consult the following factsheets:

*Sales Management Module
Accounts Payable Module
Accounts Receivable Module*

There are two versions of job costing available for ibusinessTM. The basic version is part of every installed configuration while the advanced version is an optional module.

Our job costing features make keeping track of a job simple and efficient. Every line item on a purchase order can be allocated to a job, either manually, or automatically using production scheduling. Labour can easily be added as well using convenient data entry screens.

Job costing reports can be printed using current costs, standard costs or optionally LIFO/FIFO.

The advanced job costing module has all the features necessary for managing complex projects and allows you to break down your costs into as many 'buckets' as you need. This can be critical in government contracts, and ibusinessTM allows you maintain all your costs in a work breakdown structure, so you can easily meet any and all audit requirements. You can review costs on screen and easily see the details for each bucket. Budgets can be established for each phase of a job to accurately measure your job's progress. Cost data may be entered while doing inventory transactions,

payables transactions and labour transactions.

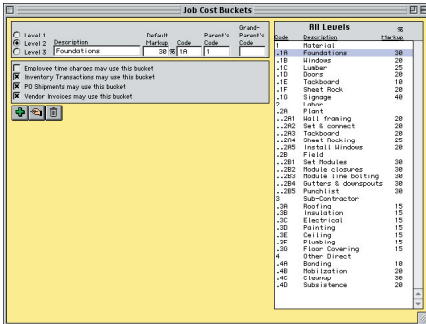
Advanced job costing means that information is easily collected and displayed, and the set up options allow you to restrict transactions to certain buckets. For example, if you have set up a bucket to collect installation labour, you can specify that inventory transactions cannot be allocated to it.

Backed up with powerful reporting capabilities and fast, accurate, validated data entry ibusinessTM job costing provides all the tools needed to ensure that you are bidding and estimating accurately.

Here are some illustrative screenshots of just a few of the features the ibusiness™ Job Costing module offers...

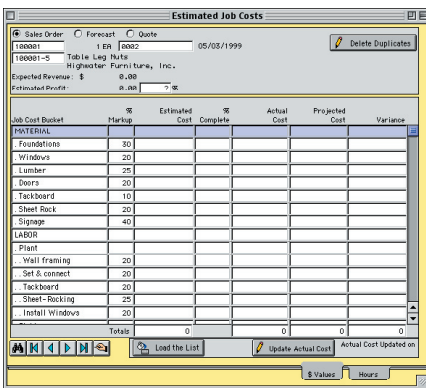
Feature Summary

Work breakdown structure
 Current or standard costs
 Job budgets
 Job cost reporting
 Employee time charges
 Billable labour hours
 Labour standards
 FIFO/LIFO costing
 Comprehensive reports
 Job cost bucketing
 Estimated vs actual job costs
 Job cost phases



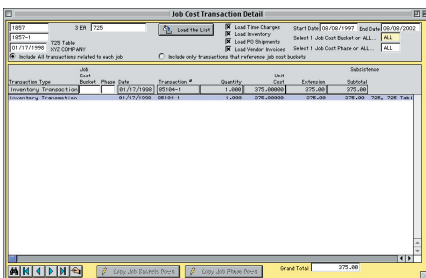
Job Cost Setup

Advanced job costing allows you to set up as complex a costing hierarchy as you need. Cost buckets may be up to 3 levels deep and you can easily define what type of transactions may be allocated to each bucket helping to ensure accurate data entry.



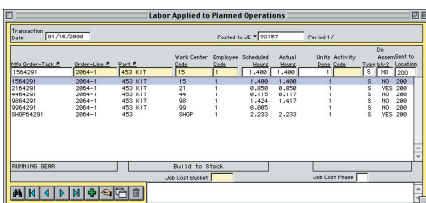
Estimated Job Costs

This window allows you to view job cost information in spreadsheet form. Easily enter budgets for jobs and quickly assess their progress and estimated cost.



Job Cost Detail

View the details of transactions against a job. You can also print reports directly from this screen.



Charges to Planned Operations

View labour details for any job quickly and conveniently including whether labour charges are straight or over-time and what job phase of the labour is to be charged to.

For:

- Further information
- Fully functional time-limited demo. CD
- On-site visit
- System quotation
- Consultations
- Training

Please contact your regional ibusiness™ agent:

infiniti
 Enterprise Solutions

Unit 15, Bank House
 331 South Circular Rd.
 Dublin. 8
 Ireland

Ph: 01-4534011 x 230
 Fax: 01-4549024

E-mail: info@ieslimited.com
 Web: www.ieslimited.com